



<http://www.benthos.org/imagelibrary/Browse.cfm>

Identification of Aeshnid Exuviae

Photographs and Direction by Maria Aliberti
Production by Pat Logan

Was...

http://www.pse.uri.edu/museum/Aeshnid_ID/index.shtml

Now...

http://131.128.91.217/museum/Aeshnid_ID/index.shtml



Natal habitat use by dragonflies
along an urbanization gradient in
Rhode Island

M.A. Aliberti¹ and H.S. Ginsberg²

¹Dept. of Plant Science and Entomology, University of Rhode Island,
Kingston, RI 02881, ²USGS Patuxent Wildlife Research Center,
Coastal Field Station, University of Rhode Island, Kingston, RI 02881



~Q & D *Aeshna* Key~

Aeshnidae → genus *Aeshna*:
(So. NE)

- rounded hind angles of head
- lateral spines on abd segments
5- or 6-9

Prementum

very stout



more or less
elongate, not
very stout
lateral spines
on segs 6-9

Prementum very stout

Palpal Lobes

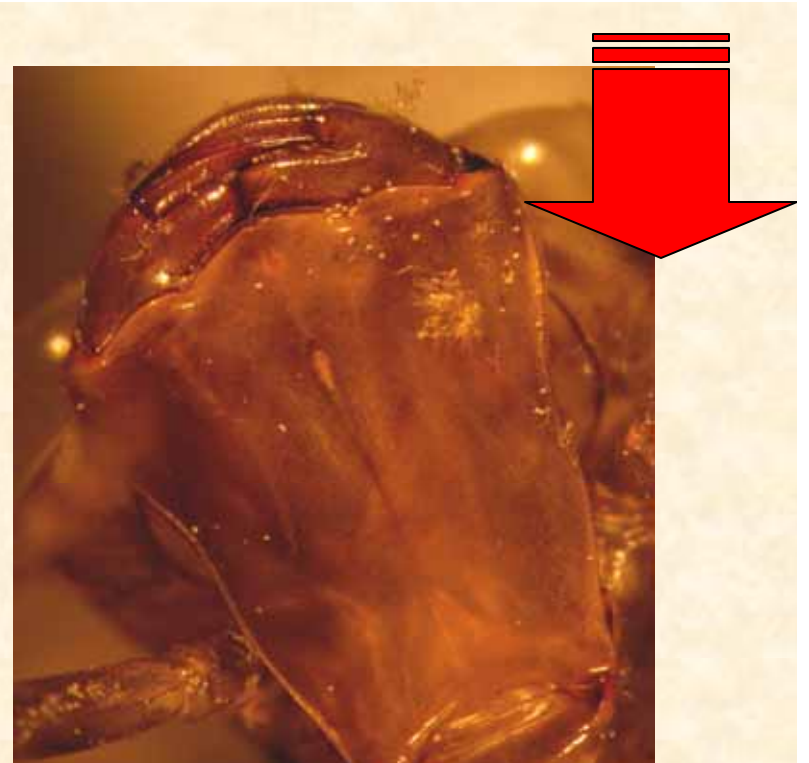
taper to very
slender, curved
points

rounded
squares-not
points

A. constricta

A. verticalis?



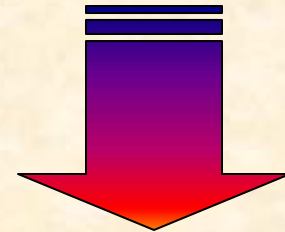


Prementum

very stout



more or less
elongate, not
very stout
lateral spines
on segs 6-9



Prementum not stout
Striping on legs...



**DARK,
obvious**

**light, or not
present**



Prementum not stout
Striping on legs DARK
Dark abdomen...

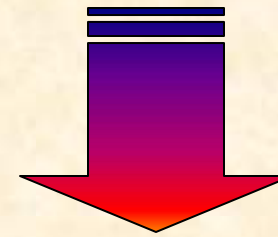


With irregular,
but distinct
pale blotches



A. interrupta

Without
distinct
blotches



Prementum not stout
Striping on legs DARK
Dark abdomen w/o blotches



Body stout



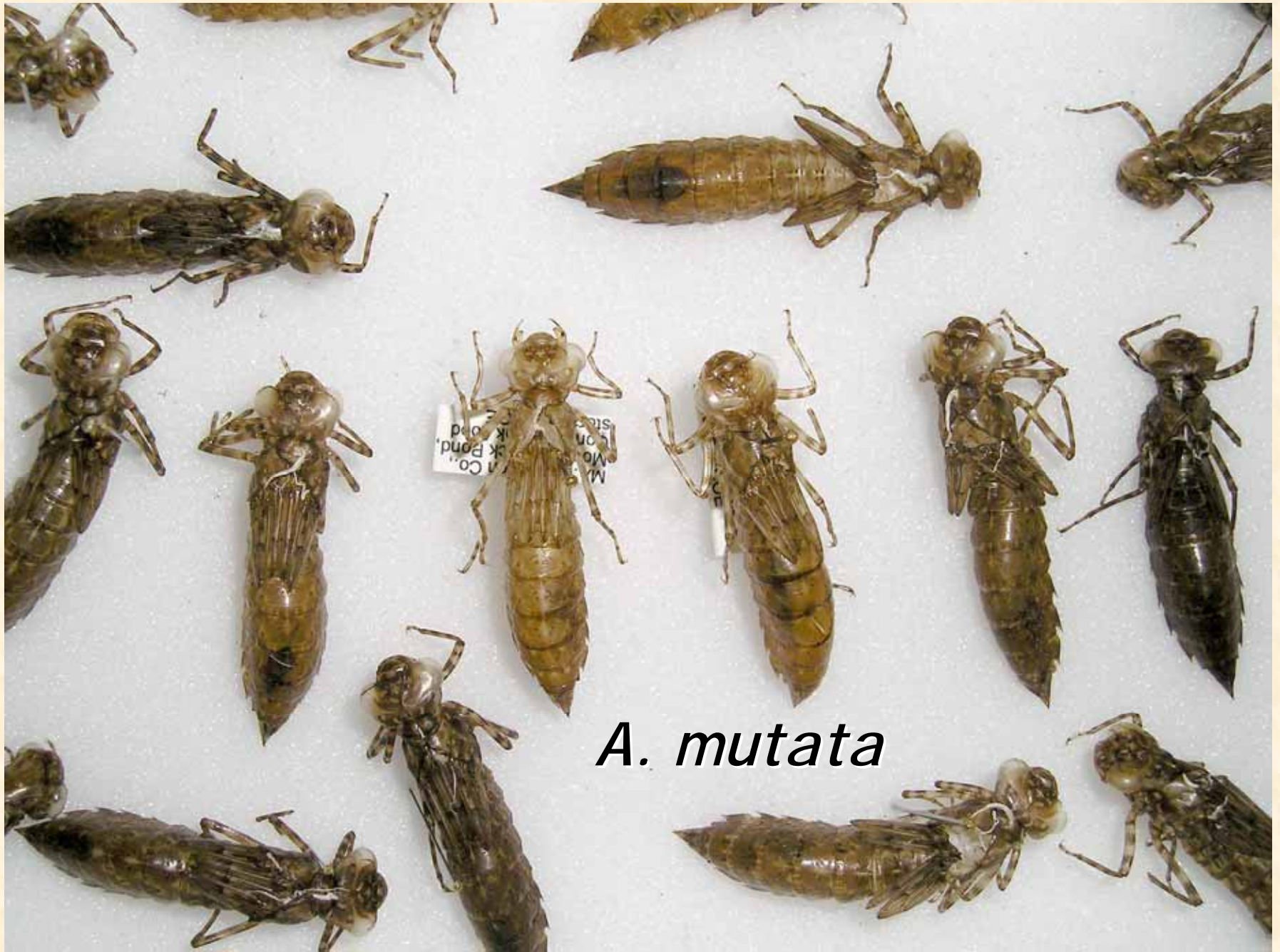
A. mutata



Body slender,
very pointy;
exoskeleton
often dark



A. umbrosa



A. mutata

A. mutata

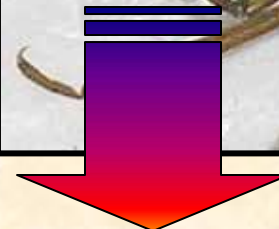


Prementum not stout
Striping on legs...



**DARK,
obvious**

**light, or not
present**



Prementum not stout
Striping on legs light
Prementum...



Long—almost
to hind coxae

Not reaching
past middle
coxae

A. tuberculifera





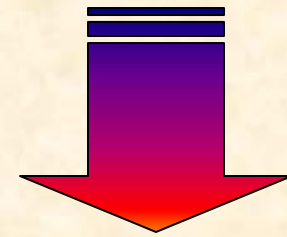
Premenum not stout
Striping on legs light
Premenum...



Long—almost
to hind coxae

A. tuberculifera

Not reaching
past middle
coxae

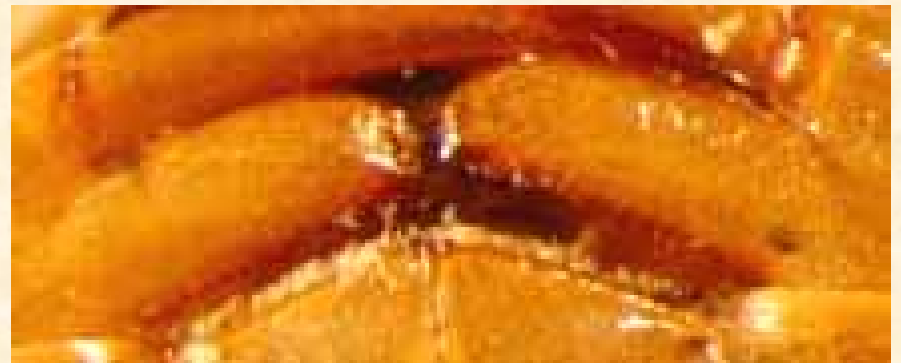


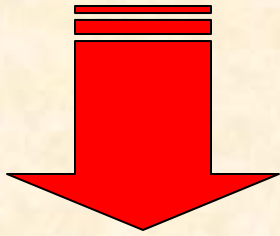
Prementum not stout
Striping on legs light
Prementum not past 2nd coxae
Palpal lobes...

taper to a
broadly curved
point

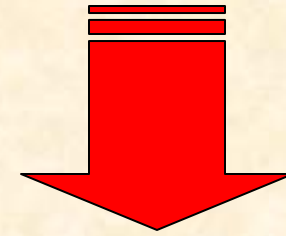


have abrupt
termination
w/sm hook





A. clepsydra



A. canadensis

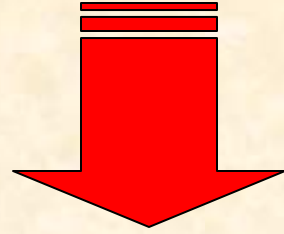
Also, dorsal median stripe...

Usually continuously colored

darkened around dorsal puncta



A. clepsydra



A. canadensis



Large, robust body shape

A. tuberculifera (like AJ)

A. mutata (not as large as AJ)

Shorter, slender body shape (often
“sharply” pointed)

A. umbrosa

A. clepsydra

A. canadensis

A. interrupta

A. verticalis

tuberculifera

umbrosa



On Website...

Photo comparisons of:

→ *A. tuberculifera* & *A. umbrosa*
prementum/palpal lobes,
ovipositor

→ *A. clepsydra* & *A. canadensis*
palpal lobes, stripe

tuberculifera



umbrosa





tuberculifera



umbrosa

clepsydra



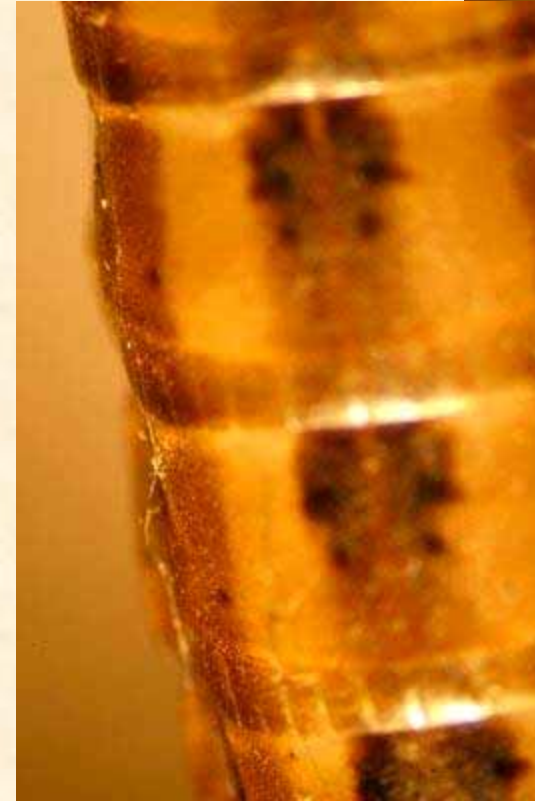
canadensis



clepsydra



canadensis



clepsydra



canadensis



canadensis



clepsydra







Aeshna umbrosa

A. verticalis

A. canadensis

A. tuberculifera

Anax junius

Epiaeschna heros

Anax longipes



