

# Northeastern Aeshnid larvae – identification notes

TW (Nick) Donnelly



*Anax junius* -  
head rounded, eyes long



*Aeshna canadensis* -  
head rounded, eyes short



*Boyeria grafiana* -  
Head trapezoidal, head  
abruptly narrowed behind  
eyes

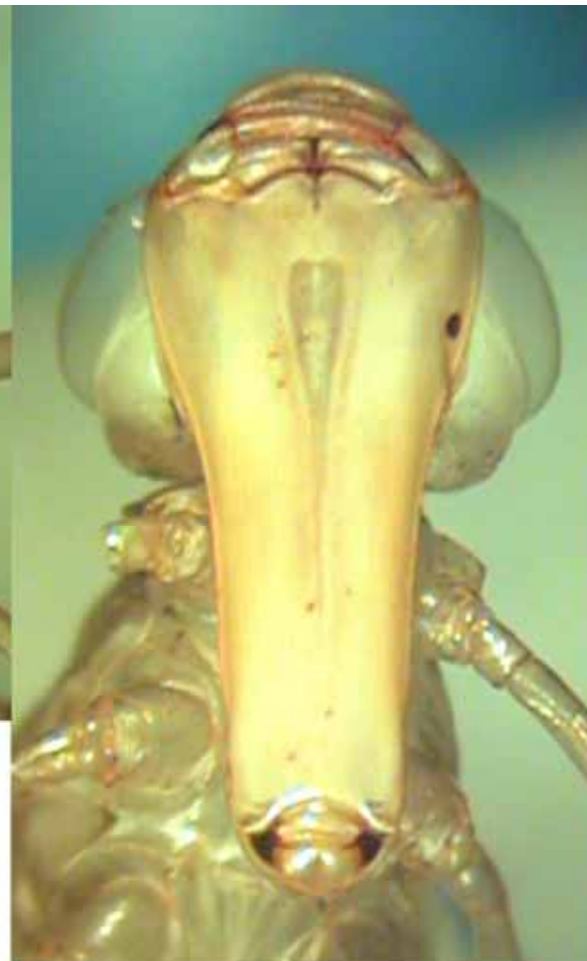


*Basiaeschna janata* -  
Head trapezoidal; head  
less abruptly narrowed

The most widespread aeshnid genera are best identified by head shape.

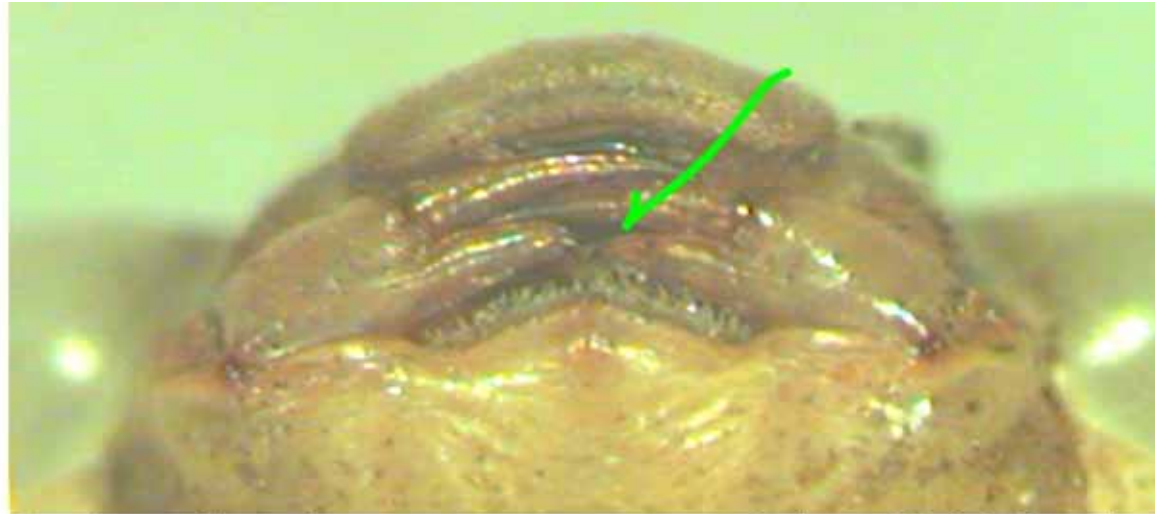


*Anax junius*



*Anax longipes*

*Anax longipes* is much larger than *junius*, but size is a difficult criterion for identification. The shape of the labium is far better.



*Basiaeschna janata* - note tapered tip of labial palp



*Boyeria vinosa* - note blunt tip of labial palp.  
Larvae also have vividly banded legs.





*Boyeria vinosa*



*Boyeria grafiana*